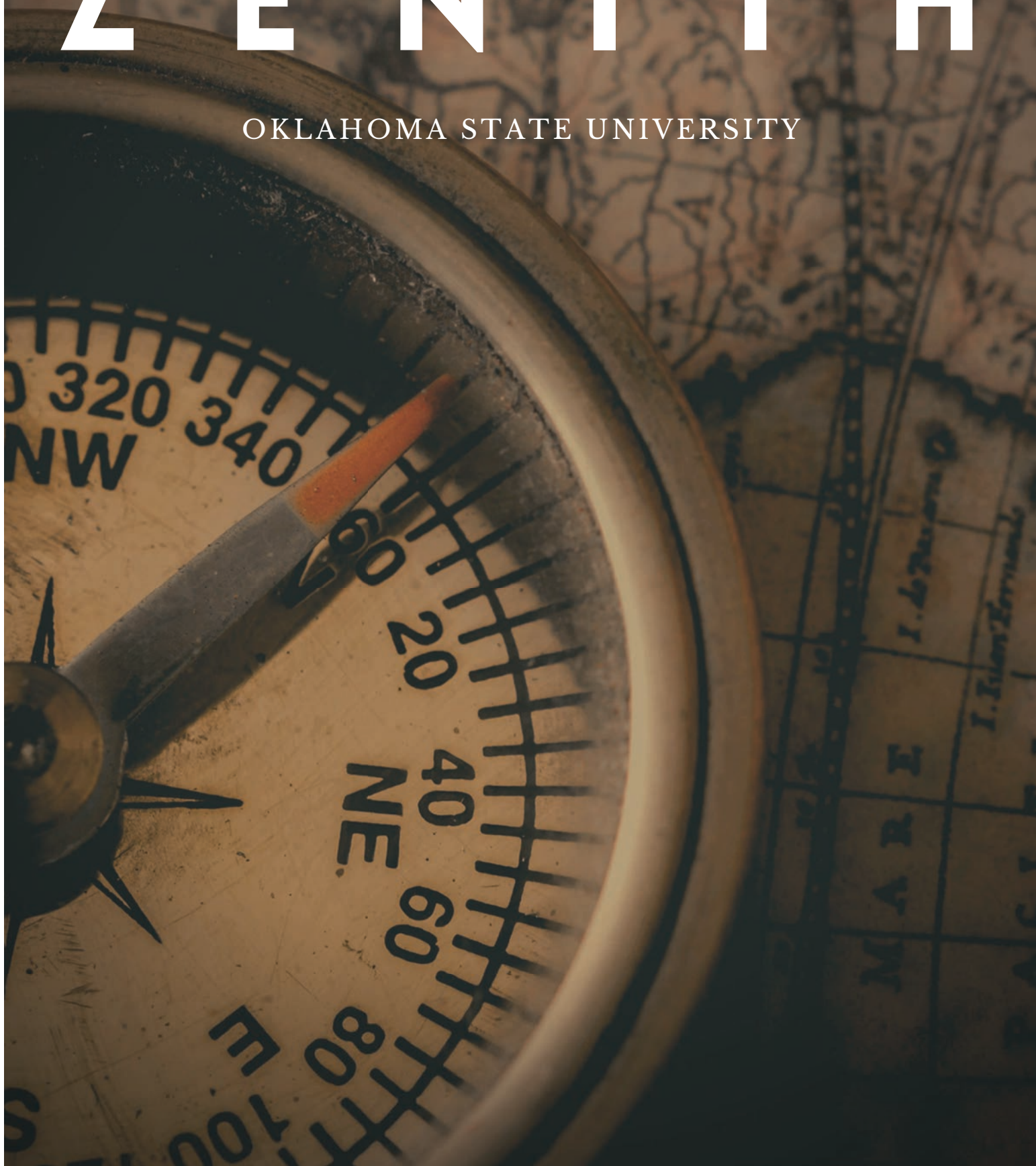


ZENITH

OKLAHOMA STATE UNIVERSITY





LETTER FROM DEPARTMENT HEAD	3
AWARDS AND SCHOLARSHIPS	4
GEOGRAPHY GRADUATES 2020	5
DONOR HIGHLIGHTS	6-7
ALUMNI NEWS & MEMORIES	8-13
GEOGRAPHERS IN THE FIELD - I	14
MEET AND GREET	15
VISITORS TO THE DEPARTMENT	16-18
CARTOGRAPHY SERVICES	19
CONOCO PHILLIPS GUEST SPEAKER SPOTLIGHT	20
GEOGRAPHY COLLOQUIA	21
GEOGRAPHY UNDERGRADUATE MENTORS PROGRAM	22
STAFF NEWS	23
GEOGRAPHERS IN THE FIELD - II	24
CENTER FOR APPLICATIONS OF REMOTE SENSING (CARS)	25
MEMORIAL	26
FACULTY NEWS	27-32
THE MISSION OF THE DEPARTMENT OF GEOGRAPHY	33



LETTER FROM THE DEPARTMENT HEAD

Dear Alumni and Friends of Geography,

Greetings from our temporarily renamed, “Social Sciences and Humanities Building.” A number of attempts were previously made to change the name of our building because of the racist policies of the building’s namesake and ninth governor, William H. “Alfalfa Bill” Murray. A student-led initiative to remove Murray’s name from our building, as well as North Murray Hall, paved the way for this symbolic change. Indeed, the Regents voted unanimously to de-name these two buildings on June 19—Juneteenth! We are eagerly awaiting news about our building’s new, official name.



Spring 2020—what a semester it was! Here is a brief recap of how the pandemic reshaped campus life. OSU first announced that classes would go online for two weeks following the Break. Then, during Spring Break, OSU decided to move all courses online for the remainder of the semester and began reducing occupancy in on-campus housing. May commencement ceremonies for our 2020 graduates were postponed to December and campus buildings remained closed until July 7.

As I write this letter, we continue to plan for in-person classes this fall, with social distancing and face masks required in our classes. A number of classrooms have already had seats unbolted and removed to facilitate social distancing. Large freshman classes are being moved to even larger rooms including the Student Union Little Theater, Seretean Center, and possibly even Gallagher-Iba Arena.

In spite of the challenges posed by the coronavirus, OSU Geography had a very good year. Our well known storm chaser, Val Castor (B.S. 1985), received a Distinguished Alumni Award. We hosted a visiting scholar from the University of Gondar in Ethiopia, Dr. Demis Mengist Wudeneh. We also welcomed three new faculty members this year: Hamed Gholizadeh (Ph.D., Indiana University), Thomas LaVanchy (Ph.D., University of Denver), and Yuting Zhou (Ph.D., University of Oklahoma). They bring, respectively, expertise in remote sensing, sustainability, and GIS, among other research emphases. Additionally, we welcomed two new staff members to our main office: Barbara Goodnight and Joanna Guevara.

We have experienced growth in all three of our degree programs—Geography, Geospatial Information Science, and Global Studies. We have enhanced our curriculum by showcasing the versatility of our degrees and adding Pre-Law, Pre-Ministry, and Business Essentials Options for Geography and Global Studies majors. We also developed a Geospatial Information Technologies minor.

The pandemic has made a powerful case for the significance of geography to our understanding of the coronavirus. We continue to emphasize the importance of geospatial and global perspectives in our teaching, research, and outreach. Our Center for Applications of Remote Sensing (CARS) has Coordinator, Jing Wang, has been posting weekly updates related to COVID-19 cases in Oklahoma. They are available at <https://cars.okstate.edu/news/345-tracking-covid-19-in-oklahoma>.

Take care, stay safe, and keep in touch! We really enjoy hearing from you and learning about your accomplishments and life experiences

Alyson Greiner

Alyson Greiner
Professor and Department Head

AWARDS AND SCHOLARSHIPS

THANK YOU to all our amazing donors who contributed to our Excellence and Scholarship funds over the past year! Your giving is essential and has a direct impact on our students and programs in the Department of Geography.

**THANK
YOU!**

We hope to receive funding in the future to:

- Endow the Outstanding Senior Award
- Endow the Shaul Medal for Teaching Excellence
- Fund a fellowship for a graduate student
- Support the Geography Excellence Fund which enables many student and faculty activities.

CONGRATULATIONS TO OUR RECENT AWARDEES!

John F. Rooney, Jr. Scholarship for Outstanding Junior:

2020: Ashlyn Amador

Outstanding Senior:

2020: Addison Van Zandbergen

Robert F. Norris for 1st Year Graduate Student:

2020: Jaryd Hinch

Shaul Medal for Teaching Excellence:

2020: Fernanda Ramirez Sáenz

ConocoPhillips GIS Certificate Enhancement Scholarship:

2020: Stephanie Grace

Croft Family Award in Geographic Education:

2020: Jacob Shepherd

Tweedie Travel Scholarship:

2020: Monique Walker

Robert F. Norris Conference Travel Awards:

2020: Jesse Andrews, Kianoosh Hassani

Greiner Travel Scholarship:

2020: Monique Walker, Caitlin Brooks

Dee Family Scholarship:

2020: Sarah Wyssmann



GRADUATES OF THE 2019-2020 SCHOOL YEAR

Summer 2019

Avonlea Keenen - M.S. Geography
Catherine Shropshire - M.S. Geography
Gustavo Ovando - Ph.D. Geography
Puja Jana - Ph.D. Geography
Robert Garret - Ph.D. Geography

Fall 2019

Haley Best - B.S. Geography
Katy Hites - B.S. Geography
Lindsey King - M.S. Geography
Alexandra Thomas - B.S. Geography
Audrey Ward - B.S. Geography

Spring 2020

Austin Boardman - M.S. Geography
McKenzie Cady - B.A. Global Studies
London Crytzer - B.A. Global Studies
Stephanie Grace - B.S. Geography
Benjamin Hemingway - Ph.D. Geography
Nicky Kazerooni - B.A. Global Studies
Madahi Lozano - B.A. Global Studies
Harrison Muegge - B.A. Global Studies
Nicole Pauley - M.S. Geography
Thornton Raskevitz - M.S. Geography
Parker Smith - B.S. Geospatial Information Science
Addison Van Zandbergen - B.A. Geography

Projected Summer 2020

Bailey Elledge - B.A. Global Studies



Post-graduation photo in December with (L to R): Katy Hites, Audrey Ward, Alyson Greiner, and Alexandra-Thomas

CONGRATULATIONS TO OUR GIS CERTIFICATE EARNERS

Fall 2019

Austin Boardman
Alexandra Thomas
Megan Hartnett
Graham Davis

Spring 2020

Lydia Bunting
Parker Smith



GEOGRAPHERS GIVE BACK

The Department is fortunate to have such an engaged and supportive group of alumni. Your contributions create additional opportunities for our students and reinforce a sense of community among us that extends across generations and around the world! We would like to recognize two alumni for recent contributions that will have a lasting impact not only on our students but also on our department.



The Dee's generous support enabled creation and endowment of the Dee Family Scholarship. This award supports a full-time student who is pursuing a degree in Geography, with a preference for a student from Enid, Oklahoma.

Orville and his wife, Mary, met at a dance at Enid High School, and both attended OSU. Orville was a Cadet Officer and member of the Scabbard and Blade, a prestigious national military honor society that recognizes both academic achievement and outstanding leadership. He was commissioned a Second Lieutenant upon graduation and retired as a Colonel in the U. S. Army Reserve in 2000. Orville was also a member of the OSU Marching Band, and elected president of Kappa Kappa Psi, an honorary band fraternity. Orville recalls many of the Geography faculty including Professor Keso, who introduced him to the love of Geography, which led him to change his major to Geography. Professor Stine open his eyes to central place theory. Because Geography did not have a graduate program at the time, Orville went to OU for his master's degree, also in Geography. He subsequently enjoyed a successful career until retiring from NGA as a senior image analyst. Orville was past president of the largest Lions Club (a service organization) in Virginia, where he received the prestigious Melvin Jones Award.

Orville and Mary share a love of maps, and she worked for many years as a map librarian and collateral researcher also for NGA. Mary and Orville are avid OSU football fans and go to OSU and WVU football games when they play in Morgantown, West Virginia. In retirement, Mary and Orville love to travel and go on cruises. Orville is an avid stamp collector and family genealogist, having traced ancestors back to the Mayflower.





GEOGRAPHERS GIVE BACK

DAVID WAITS
M.S. GEOGRAPHY, 1988

David's generous support endowed the Stephen W. Tweedie Travel Scholarship and significantly enhanced the endowment of the John F. Rooney, Jr. Scholarship. Both scholarships are transformational for the geography department and provide significant impact on students in the program. The Tweedie Travel Scholarship encourages student travel, professional development, and/or field research. It honors Dr. Steve Tweedie, a Geography professor who worked in the department from 1971 to 1997. The John F. Rooney, Jr. Scholarship recognizes the department's outstanding junior. The scholarship honors Dr. Rooney, former department head and pioneer of the study of sport geography. David grew up in Buffalo, OK and Ashland, KS. After ten years of farming and ranching, he went on to earn his B.S. in Economics ('86) and a M.S. in Geography ('88), both at OSU. David was first introduced to remote sensing and GIS technologies as an undergraduate in a geography course he was taking as an elective.

David went on to earn a Ph.D. in Land Management from Texas Tech University. David was the Agriculture Program Manager at a NASA commercialization center applying satellite technology to land management practices. He then accepted an assistant professor position in the OSU geography department for several years while continuing to develop innovations in precision agriculture.

David established SST Software in Stillwater in 1994. One example of his creative use of technology includes mapping the soil and fertility characteristics in an agricultural field and then linking that data to field-based GPS receivers to enable site-specific applications of fertilizers. David and SST quickly became recognized leaders at the forefront of agricultural innovation. In 2018, SST was purchased by Proagrica, a global leader in the agricultural geospatial technology field. David has since retired, but the company's headquarters remain in Stillwater with a Waits at the helm - David's son Matt now serves as president for Proagrica's Americas region.

David has an appreciation for OSU's land-grant mission and a heart for service back to his alma mater. He served as president of the OSU Research Foundation from 2013-2018 and is an ardent supporter of causes across campus. He and his wife Cindy are avid Cowboy sports fans. David is often seen riding his Harley with a group of guys, and he recently completed motorcycle trips in all 48 lower states.





ALUMNI NEWS & MEMORIES

2019 GEOGRAPHY DISTINGUISHED ALUMNUS: VAL CASTOR

In September 2019, the College of Arts and Sciences held its Hall of Fame Ceremony. Val Castor received a Distinguished Alumni Award for his accomplishments and service. The Department of Geography is pleased to recognize and congratulate Val for his success.

Val is a native Oklahoman. He was born in Ardmore and raised in Tulsa, where he graduated from Nathan Hale High School. He earned his bachelor's degree in geography from OSU in 1985 and later obtained a meteorology degree from the University of Oklahoma.

In the summer of 1991, Val was hired by KWTW and became Channel 9's first tornado chaser. Since then, Val has chased and reported on close to 1,000 tornadoes including four EF5s and the largest tornado in recorded history, which occurred near El Reno in 2013.

In 1998, his wife, Amy, became his storm-chasing partner. Together they have covered some of the most extreme weather imaginable — floods, blizzards, wildfires, hurricanes, hail storms, wind stores and, of course, tornadoes. They have been featured on numerous weather specials and documentaries both national and international. They are humbled and honored to have the privilege to serve the people of the great state of Oklahoma.

Val resides in Stillwater with his wife and six children. He is an active member of Bible Baptist Church.





RECOLLECTIONS OF THE DEPARTMENT FROM EMERITUS PROFESSOR JERRY CROFT

Three people I remember from the earlier days are Ed Keso, Ralph Birchard, and Jim Stine. Dr. Keso seemed to like me for some reason and liked to tell me stories of when he was the Geography Department Chairperson in the 1940's. He asked that I be one of his pall bearers at his funeral service.

Ralph Birchard was the undergraduate advisor, and he was a very kindly man who helped all the undergraduate majors whenever he could. After 25 years (or so) of service the College of Arts & Sciences passed him over (again) for promotion to professor, so he resigned and moved to East Carolina University as a professor.

Jim Stine was a brilliant man who had served in the Army during the Korean War and had suffered some injuries. Some highly motivated undergraduates naturally gravitated to Jim Stine for academic and intellectual advice.

We had a Master's degree program on the books, but it lay dormant for a number of years. I walked into the department for a visit during the spring of 1966, a day after John Hidore had resigned; he had been promised that Geography would be separated from the Geology Department and that he would become chairman of the new Geography Department, but the College again reneged on their promise, costing the department their most prominent faculty member. I was 25 years old and was completing my first year as an Instructor of Geography & Sociology at Northwestern State College in Alva, Oklahoma. The day I walked in for a visit, Jim Stine and Ralph Birchard asked if I would like to teach at OSU; I countered with "is the Pope catholic!" and my career began the school year of 1966-67 (the year of the very first Super Bowl).

Unbelievably, by today's standards, no one ever asked to see my transcript to ensure I had the M.A. in Geography. To help me prepare to be a better teacher of geography, I applied for and was accepted for a National Science Foundation Summer Institute for college-level geography teachers at the University of Minnesota. This Institute was monumental in my development as a teacher of geography.

I got to meet John Borchert, Jan Broek, Cotton Mather--all Minnesota professors--as well as Preston James (Syracuse)

and Arthur Robinson (Wisconsin). One of the highlights of the Institute happened when Broek and James debated "regional geography vs. topical geography." It was also interesting that David Lanegran and John Adams were graduate students during this Institute so I got to meet them and Lanegran became a friend of mine. I was able to transfer these 10 hours of credit in geography to my Ed.D. program at the University of Tulsa; this was perfect because I specialized in geographic education--one of the few people in the United States who was trained in both geography and education at that time.

Shortly after I joined the OSU faculty, those of us teaching Geography were promised a separation from the Geology Department if we could find a suitable department head. By this time John Hidore had left OSU. (Incidentally, he became head of the department at the University of Indiana and was a prominent climatologist.) We interviewed a couple of people, but they were not interested after seeing our Halloween-like headquarters (complete with paint peeling from the walls), or for some other reason. I kept bringing up my friend, John Rooney, but was usually told that he was too young. Finally, I wised up, and when asked how old he was, I said I wasn't sure, but that he was older than me (which is true, as he is four days older).

Rooney put together a department that made us one of the top departments in the country, as we focused on topical geography led by our dynamic head, John Rooney, whose specialty, of course, was Sport Geography, even though he could not make a free throw! Rooney, and others that he hired, approached cultural topics spatially, and helped put our department "on the map" so to speak. Our Master's degree was reinstated from its dormant days, and now we have a Ph.D. program. My career highlight came when I developed a teaching-learning unit on how the fine arts can tell environmental stories; I wrote John Denver telling him how I was using his music in the learning unit and invited him to my presentation at the Rocky Mountain Social Science meetings in Denver; he came! Best paper ever! Far out!

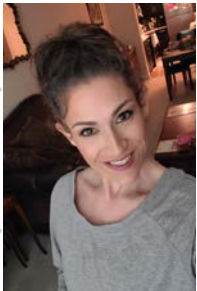
I hope all of you remain safe and happy; I loved my time at OSU, teaching approximately 30,000 students during my 25-year career, retiring as a Professor Emeritus in 1992.

Dick Hecock:
Professor Emeritus

After 30 years in academia, and another 20 in natural resources management, he is now mostly unburdened from serious responsibility. The Governor of Minnesota says boating is an “essential Minnesota activity” so, he carries on measuring lake levels, clarity, chlorophyll-a, and counting loons (before and after Eagle predation). Off season he keeps track of ice-out and ice-in dates (over 126 years of record, open water periods ARE getting longer), and watching for bear images from his Ring camera. He's put together some family history - more geography than history.

Covid-ly, his family is enduring. They do grocery and wine store outings every other week. Otherwise they stay amused by walking Audrey the dog (there are lots of trails), and with Zoom sessions with family, Rotary, PEO, Emergency Preparedness, Museum Board meetings, and similar. So far so good!

Amanda Weber: Current Doctoral
Student, ABD



She is currently serving as a civilian with the DoD as a human geographer. In the near term, she will be transitioning to a two-year rotation with the National Center for Medical Intelligence. During this time, Amanda will also be deploying overseas as a geospatial analyst. While this seems like an awful lot, she is also actively working towards completing her PhD! She is very much looking forward to the end of the Stay-at-Home order, as teleworking is difficult. Since travel has not been an option as of late, here is a recent telework photo! Honey, her dog, is also doing her part to keep people healthy and has worked to show people how to wear masks properly – see photo! She hopes everyone is staying safe and healthy.



Ramin Zamanian: Former Student

Ramin Zamanian is leading the Geography side of the Anthropology and Geography Department at Houston Community College. He is glad to be working with O.S.U. Geography alumna Dr. Shireen Hyrapiet, a friend and colleague with whom he took classes and taught alongside while at Oklahoma State. Ramin recently secured funding for O.S.U. Geography alumnus and friend, Dr. William Price, to visit Houston Community College as a guest speaker to discuss his research on industrial tourism in Wales. Unfortunately, the talk had to be cancelled due to the Covid-19 pandemic. Ramin was nominated this year for the Texas NISOD Teaching Excellence Award, and he has been writing the following entries in the forthcoming Contemporary Migration Encyclopedia: Environmental Refugees, Ethnic Cleansing, Involuntary Migration, Refugees, and Xenophobia. He would be happy to answer questions from anyone aspiring to become a college-level educator as a career (Ramin.Zamanian@hccs.edu). Go Pokes!

Lewis Armstrong: B.A. 1965



Lewis reports that he was in Army ROTC at OSU and his Geography mentor was Professor Jim Stine. Lewis retired from the Army in 1993, but then worked as a librarian at Abilene Christian University (1996-99). During that time, he was an adjunct professor in the History Department and taught Historical and Cultural Geography, which he loved doing. He went on to work as a librarian at Emporia State University, from 1999 until his retirement in 2003. He lives in Georgia now, and since retiring, he has been busy as a writer and storyteller. He and his wife, Linda, published 430 recipes in their Todd Family and Friends Cookbook. Lewis also published a collection of his stories in *Stories by an Oklahoma Boy*, and wrote his autobiography, *Oklahoma Boy on the Bumpy Road of Life*.

The photo shows him when he played George Washington, in a uniform that his wife made.

Jordan Brasher: M.S. 2016

This semester, Jordan completed his PhD in Geography at the University of Tennessee with the distinction of Magna Cum Laude and a Graduate Certificate in Africana Studies. He also accepted a tenure track position as Assistant Professor of Geography at Columbus State University in Columbus, Georgia. Jordan is really thrilled to share this news with the OSU Geography Department! He hopes things are well there for everyone.

Brent Colbert: B.S. 2011

Brent has been a police officer for over 5 years since graduating in 2011. He is currently a police officer with the city of Catoosa, Oklahoma. He is the public information officer and handles all media and social media.

Brent thoroughly enjoyed his time studying geography at OSU. With the wide variety of classes offered by the Geography Department, he acknowledges he learned so much.

James M Dryden Jr: M.S. 2011

James is currently working in Tulsa for Black & Veatch consulting where he works on the buying and selling of utility-scale critical infrastructure energy assets including wind, solar and battery storage projects!

HISTORY OF GEOGRAPHY JOURNEY BY LT. COL. S.L. "HACK" HACKWORTH

M.S. 1971

I graduated from Enid High School in 1961 and attended OSU that Fall semester. I finished one semester of Army ROTC and was promoted to Cadet Corporal. I then joined the USMC as a PVT and after firing HIGH EXPERT in USMC Boot Camp was designated a "SNIPER", and after finishing the Fleet Marine Corps NCO Academy was promoted to CPL.

After returning back to OK in 1965, I volunteered for the US Army Special Forces as an A-Team Intelligence NCO. I attended Phillips University in Enid (now Northwestern Oklahoma State University) while working at Vance AFB as a jet engine mechanic at nights. When the new GI Bill came out, I returned to Oklahoma State University back in the Fall of 1965. I selected my major to be GEOGRAPHY. I also managed the Training for our two Special Forces "A-Teams" and the "B Team" and participated in monthly field exercises and Summer Camps while a full-time student. I also finished other courses such as Airborne, Jump Master, Jungle Warfare, and Special Operations. Taught Land Navigation at Fort Polk, LA.

Upon graduation with my BA in Geography in 1969, I was offered the basketball coach job at the Oklahoma Military Academy (the predecessor to Rogers State University), but I had already accepted a Graduate Teaching Assistant job to support my GEOGRAPHY MS Degree Program. I taught over half the Labs for the Intro to Geography course required for most Education Degrees at OSU. I was also in the revitalized Geography Club.

I was offered another rocker to Sergeant First Class or a Direct Commission as a LT. I accepted the Direct Commission and upon graduation with my M.S. in Geography, was sent to the Infantry Officer Basic Course at Fort Benning, GA in 1971 and also completed the Aerial Surveillance Officers Course at the US Army Intelligence School in 1972. I later finished the Military Officers Advanced Course, both the US Army and USMC Command and General Staff College Courses, plus many others such as Joint Command and Control Communications, S-4/G-4/Comptroller Course, AWACS Crew Course, Ground Surveillance Course, Joint Operations Officer (54), and US Geological Survey Computer Mapping Course. I served in several Civilian and USAR assignments such as China/Korea Area Specialist (DIA), Strategic War Plans US Army DCSOPS, US Army DCSINT UAV Program Manager, FEMA Emergency Communications Site Surveyor/ System Designer for US Virgin Islands.

My major in Geography helped me immensely as the above duties and assignments might indicate. Geography gave me a firm foundation in mapping, planning, analysis skills and locational awareness. All my other skills just fit nicely in-between.

I am now retired after almost 37 years of service. I enjoy many hobbies including: Collect Springfield Arsenal Infantry Weapons/Bayonets, US Fighting knives, Canon Cameras, Bows/Arrows, & Fishing Gear. Restoring several old 356 Porsches, a 1969 Camero Convertible, 1982 924 Turbo Porsche, & 1965 VW Beetle. Dabble with Farming and Ranching as we own 80 acres West of Tahlequah, Done Construction: renovated homes in NJ, VA, AZ, OK to include blueprints to final inspection of our historic home in Tahlequah: an American Four-Square Arts and Crafts style started 1906 (Indian Territory) and finished 1907 (Oklahoma Statehood). The main house is two story Poured Concrete four bedrooms + bath. I added my designed two-story addition with three bedrooms, two and 1/2 baths, sun room, pantry, + laundry room. Also added a rear deck and a two-story 30X50 metal Garage.

Gustavo Ovando Montejo:
M.S. 2015

Gustavo has accepted a tenure-track position at Utah State University working in the Department of Environment and Society with an appointment in the Blanding Campus of USU's statewide campus system. He will be teaching courses in Range and Forest Management and GIS. He sends his thanks greetings to the entire department!

Pat Briley: B.S. 1986



Pat is retired from the US Army after a 30 year career. After retirement, he spent two years in Baghdad Iraq with the US Army Corps of Engineers leading a team of master planners, real estate experts, and GIS professionals in support of Operation Inherent Resolve. He is currently on an extended leave of absence from the government and spending time with his wife Stacy – whom he met at Tumbleweeds in Stillwater – and his two Spencer and Grayson at their home in Rogers Arkansas.

Jennifer Spencer: M.S. 2000

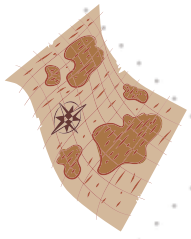
Jen Spencer currently resides in Alexandria, Virginia and is a civil servant working for the United States Navy. She serves on the Ship Introduction Specialist Team, a small team responsible for planning, managing, and executing ship milestone ceremonies (keel layings, christenings, and commissionings) in a fiscally responsible manner that honors the namesake and upholds the customs and traditions of the United States Navy.

Jen has incredibly fond memories of her time in the Oklahoma State University Geography Department and is finding it a little hard to believe that she graduated with her Master's of Science degree 20 years ago this July. Time sure does fly!

BLAST FROM THE PAST!

Steve Stadler and Andrew Snook discuss the cutting-edge research in 1987. (Snook's M.S. advisor was John Rooney.)





GEOGRAPHERS IN THE FIELD - I



A literary trip to Saint Petersburg and medieval cities of Northwestern Russia

By Carlos Cordova

Carlos Cordova traveled to Russia during the Christmas-New Year's Break, visiting Saint Petersburg, Veliki Novgorod (perhaps the oldest standing city in Russia), Staraya Russa, and Pskov.

Saint Petersburg is the city of Fyodor Dostoyevsky. Of the many sites mentioned in his novels, the building where Rodion Raskolnikov (the main character of *Crime and Punishment*) supposedly lived. Saint Petersburg is home to other famous writers. Some of the Peterburgan writers most loved by Carlos are Josif Brodsky and the Strugatsky Brothers (Arkady and Boris). The latter are perhaps the most renowned authors of Soviet Science Fiction.



The Grand Market. A museum with the representation of all regions of Russia in miniature. A very interesting locality for geographers.



Dostoyevsky's home in Staraya Russa, the town of the Karamazov Brothers. The setting was used as the house of the Karamazov's father.

Staraya Russa is the town of the Karamazov Brothers. There is a museum devoted to the novel, as well as the house of Dostoyevsky himself (see picture)

Pskov is another important medieval city (along with Veliki Novgorod), with one of the most beautiful kremlins I have visited (see picture). Yes, there are several kremlins in Russia.

Russia in winter can be fascinating, though this year this part of Russia had a very mild winter.



The Pskov Kremlin.



You may remember our former exchange graduate student, Alexander Prishchepov. I met with him and his family for New Year's Day.



MEET AND GREET

Anthony Valentine
Undergraduate Advisor



Anthony joined the department as undergraduate academic advisor in January. Anthony is a senior academic advisor in the College of Arts and Sciences Student Success Center, where he has worked for the past 12 years. In addition to advising for Geography, Global Studies, and Geospatial Information Science, Anthony advises for American Studies, Languages and Literatures, and area studies minors. Anthony is an alumnus of OSU with degrees in philosophy and a degree in counselor education from the University of Wisconsin-Platteville. Each semester Anthony teaches an online section of Philosophies of Life, and enjoys relaxing with a good series binge or the occasional tabletop role-playing game with friends.

Barbara Goodnight
Administrative Assistant



Barbara is the new Administrative Assistant to Dr. Alyson Greiner in the Department of Geography. She was born in El Reno and has lived in Oklahoma her entire life. She loves to travel and meet new people as well as trying out new dishes from other areas. She loves her position as Admin. Ast. because she is able to meet a lot of the students and faculty, which keeps her feeling young at heart. While she loves camping and being in the open air, she really has a desire to cook original desserts and sharing them with friends. While socializing is not a good idea right now, she does enjoy reading and having her grandchildren spend time with her. I am glad to be an Okie working for OSU, GO POKES!

Joanna Guevara
Administrative Support Assistant



Joanna is our new Administrative Support Assistant. She originates from Rockford, IL, but moved to Oklahoma just a year ago after finishing her M.F.A in Arts Entrepreneurship and Management at Arizona State. While in school, Joanna worked with a nonprofit in Carrefour, Haiti in building arts and leadership programs for their local students. She has stayed close with those abroad and looks forward to the next time she can visit again. Right now, she is loving southern living and establishing her Okie roots!



VISITORS TO THE DEPARTMENT

GRANDPARENT U.



Future Geographers

Last summer the department hosted a two-day session of Grandparent University (GPU). GPU gives grandkids and their grandparents the chance to explore a major together. Led by Clay Barrett and Alyson Greiner, the sessions focused on learning activities showing the fun and usefulness of geography.



VAL CASTOR



Val Castor Geography alumnus and Senior Stormtracker for KWTN News9 in Oklahoma City, led a department question and answer question session, explained some of the equipment on his truck, and caught up with his former professor, Dr. Stadler.



JERRY CROFT



Emeritus Professor Jerry Croft and members of his family, shown here in the Keso Room, visited the department in December and shared stories about OSU when he was on the faculty. The plaque on the table recognizes Jerry for his participation in the first ever National Geographic Bee in 1989 in Washington, D. C.

GTU News:



The Chi Chapter of GTU (the national Geography Honorary) has Fernanda Ramirez as its president and Maria Ramirez and Jesse Andrews as its other officers. Its co-advisors are Steve Stadler and Don Colley. The virus shut down GTU's most important time of the year when new members are selected and initiated. Despite the difficulties the Chi chapter will be initiating some new members soon and looks forward to an active upcoming school year.

CARTOGRAPHY SERVICES

By Michael Larson

It has once again been very busy for all of us at Cartography Services. As usual, we have spent most of our time split between several key working areas, including the major cartographic projects, and map design and compilation work.

Cartography Services is now in its eleventh year working with Dr. Allen Finchum on the SHPO/OLI project. Our portion of this project, funded by the Oklahoma State Historic Preservation Office, involves data cleaning and updating the Oklahoma Landmark Inventory (OLI) database. Undergraduate students, Ke'Ona Herron, Matthew Burton and Connor McKeaigg continue the work on this project.

Cartography Services, working with lead PI Dr. Alyson Greiner, Dr. Lowell Caneday, and GIS Specialist Hank Yang, has started our third year working on an ongoing RMP-GIS grant from the Oklahoma State Parks. This project has dual, overlapping missions, the first of which is updating the Resource Management Plans for each park. The second mission is to continue to build, update, and maintain a geospatial database and web viewer of all the infrastructure and facilities in each of the State Parks. This project has helped fund a number of students, including (but not limited to) Amanda Lind, Christina Woehrle, Nicole Pauley, Fernanda Ramirez Saenz, Niyanth Ponnusamy, and Parker J. Smith. Their hard work out in the parks collecting data is essential for the success of the project.



This past spring, Cartography Services once again attended the 2020 GIS Day at the Capitol. Participating in this event were (left to right): Hayden Harrison (alum), Lauren Wood (alum), Dr. Yuting Zhou, Parker J. Smith, Emily Gile, Greg Hackman (alum), Stephanie Grace, Adam Littlefield, Maria Sol Ramirez Saenz, Shellie Willoughby (alum), and Michael Larson.

Cartography Services and Dr. Yuting Zhou received an OSU Student Technology grant to purchase a 3D printer to be used in classroom instruction. The purpose is to give students hands on learning for 3D mapping and terrain modeling. In addition to everything else, Cartography Services continues to work in its traditional role assisting the faculty in the Geography department with their various projects and research. Faculty we have assisted include Dr. Dale Lightfoot, Dr. Thomas LaVanchy, Dr. Steve Stadler, Dr. Rebecca Sheehan, Dr. Hongbo Yu, and Dr. Jacqueline Vadjunec.

Lastly, Cartography Services would like to acknowledge the departure of our GIS Specialist, Clay Barrett. Clay was an alum of the department, receiving his Masters degree in 2015, and working for Cartography Services as a full time staff member up until the spring of 2020. He worked on a number of projects, including the Geologic Highway Map Series for the AAPG, the EPSCoR funded Climate Variability Research program which examines whether “socio-ecological systems can adapt sustainably to climate variability” with Dr. Peter Kedron, and various aspects of Dr. Jacqueline Vadjunec’s research grant Land System Vulnerability and Resilience to Drought. Clay is continuing to work on the OSU campus for “another department”, but his presence in the Cartography Service Lab will be greatly missed.



State Parks personnel and OSU Geography RMP-GIS research crew from the 2019 Beavers Bend State Park Kick-off meeting.



CONOCOPHILLIPS GEOGRAPHY CAREER SPOTLIGHT SPEAKER



Dr. Daniel Griffith, fourth from the right, poses with students, staff, and faculty following his talk and reception.

L to R: Hongbo Yu, Parker Smith, Kellen Bullock, Michael Larson, Daniel Griffith, Steve Stadler, Rebecca Sheehan, Thomas LaVanchy.

We were very fortunate to feature Dr. Daniel Griffith as the ConocoPhillips Geography Career Spotlight Speaker. Dr. Griffith is the Associate Program Head of the Geospatial Sciences Program at UT Dallas. Dr. Griffith gave a presentation entitled "Spatial Autocorrelation is Everywhere." Dr. Griffith also is the recipient of the International Spatial Accuracy Research Association's (ISARA) 2020 Peter Burrough Medal for outstanding contributions to spatial uncertainty research. The Geography Career Spotlight Speaker event is made possible by generous support from ConocoPhillips.



Geography Colloquia

In September, Dr. Demis Mengist Wudeneh, our Visiting Scholar from the University of Gondar, Ethiopia, presented "Implications of Large-Scale Agricultural Investment for Livelihood Security and Regional Development: The Case of the Gambella Region, Southwest Ethiopia." Dr. Wudeneh received a Civil Society Scholar Award through the Open Society Foundations research program. This award enabled him to spend three months in our department completing additional post-doctoral research.



Geography guest speaker, Yaaminey Mubayi, presented Feb. 14. Yaaminey Mubayi is a Historian and Social Development Professional with nearly 20 years of research and field experience in the sector of Cultural Heritage and Sustainable Development. Her presentation was on her "Water and Historic Settlements in India: The case of Ellora-Khuldabad-Daulatabad" research. Dr. Mubayi earned her undergraduate degree from Mount Holyoke College, USA and chose to complete her Post Doctorate and Doctoral Studies in History at the Jawaharlal Nehru University, New Delhi. She then received a M.Sc in Social Policy (NGO Management) from the London School of Economics.



GEOGRAPHY UNDERGRADUATE MENTORS PROGRAM (GUMP)

The Geography Undergraduate Mentors program encourages and supports opportunities for students in our degree programs to participate in research. The students work closely with a faculty mentor on a research project. In the process, they prepare a presentation on their research and they present the results of their research at a professional conference.

Four students and their faculty mentors participated in GUMP this year. They traveled together in a university vehicle to Fort Worth, Texas, to take part in our regional AAG conference, known as SWAAC. This was their first time at a professional conference, and they not only presented their research, but they also got to attend a variety of different sessions.



*Photo L to R:
Emily Gilè, Addison Van Zandbergen, Stephen Stumpf, a geography major and participant in the GeoBowl competition, Madahi Lozano, Christine Giles*

GUMP RESEARCH PROJECTS

Undergraduate and Faculty Mentor: Christine Giles – Alyson Greiner
"Food Deserts in Oklahoma: A Convergence of Research and Narrative"

Undergraduate and Faculty Mentor: Emily Gile – Reuel Hanks
"Hydropolitics in Central Asia: Has the Rubicon Been Crossed?"

Undergraduate and Faculty Mentor: Madahi Lozano – Carlos Cordova
"The Relationship Between Wildfires, Prescribed Fires, and Drought in Oklahoma"

Undergraduate and Faculty Mentor: Addison Van Zandbergen – Carlos Cordova
"Former Lake Texcoco, Mexico City: Urban Park or Ecological Reserve?" *
*Won 3rd place in Student Poster Competition



STAFF NEWS



Michael Larson

Manager, Geospatial Systems OSU
Cartography Services

November 2020 will start Michael's twenty-fifth year with the Department of Geography. While Michael performs amazing work for the faculty members and students of the Department of Geography, he also continues to support faculty, staff and students from other departments on campus as well as work for various entities, large and small, public and private, off campus. Michael's focus encompasses several major project areas, including his work as Co-PI on the RMP-GIS Oklahoma State Parks grant, his work and role assisting on Dr. Vadjunec's Land System Vulnerability and Resilience to Drought research grant, and his role as Co-PI directing the data update and cleaning for the State Historic Preservation Office (SHPO) Oklahoma Landmark Inventory (OLI) database update.

Continuing his role as an educator, spring 2020, was Michael's nineteenth year teaching the Computer Cartography class. In addition to teaching, Michael continues to be involved with students in a variety of ways such as being the co-advisor for the undergraduate Geography Club and assisting the Geography faculty with the all-day field trip to western Oklahoma for the physical geography course.

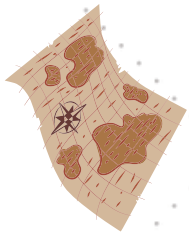
At the 2019 OKSCAUG Conference, Michael gave a presentation titled, "Fun with Projections: When the Misuse of a Projection Causes a Kerfuffle or a Brouhaha." At the same conference he taught a workshop titled "Introduction to Projections: The Art and Science of Making a Round Earth Flat". Additionally, during the summer of 2019, Michael taught another workshop for the Juntos Se Puede/United We Can program titled "Digital Mapping Technologies for a Changing World". When he is not involved in Departmental and geospatial business, Michael enjoys spending time with his wife and family and time permitting, puttering in his garden.



Jing (Jean) Wang

Coordinator Center for Applications of
Remote Sensing

Jing Wang is starting her 6th year working at the department. In the past year she has been working on launching and updating the website for the Center for Applications of Remote Sensing (<https://cars.okstate.edu/>). She continues to working with Cartography Serices for the State Park project to create planimetric map using Lidar data. She works with Dr. Gholizadeh and Dr. Zhou for research and completed a project on an invasive lily at Lake Carl Blackwell. Since the outbreak of COVID-19 in the state of Oklahoma, March 2020, Jing has been updating the cars website with maps and graphs daily to track the progression of COVID-19 and its impact in Oklahoma.



GEOGRAPHERS IN THE FIELD - II

A Study Abroad Trip of the Adriatic

By Jon Comer

Jon Comer and Tom Wikle co-lead a Study Abroad trip on the Geography of the Adriatic in May 2019. The OSU contingent included PhD student Jordan McAlister, friend of the group (and OSU alumna) Dr. Christine Cooper, and 4 students. More photos can be found in the August, 2019 departmental newsletter.

Jon and Tom arrived ahead of their students and explored Belgrade, Sarajevo, Zagreb, and Novo Mesto. They even got to tour Plitvice Lakes National Park in Croatia before heading back to Rome to meet their students.



Blackwater Bay, King's Landing (Dubrovnik). As it appears in Game of Thrones



Plitvice Lakes National Park, Croatia



Mural on government building in Tirana, Albania



The Colosseum in Rome



Cemetery above Sarajevo, Bosnia with most deaths in 1992-95 during the Yugoslav War

Once the students arrived in Rome the real fun began touring classic sites such as the Vatican, Colosseum, Forum, Spanish Steps, and Pompeii's ruins. After Rome's adventures, the group took a ferry to Albania and explored Albania, Montenegro, and Croatia. The students saw lots of locales filmed for the Game of Thrones TV show (Dubrovnik serves as the inspiration and frequent set location for King's Landing)! Their final visit was to the Island of Hvar and its resort city of the same name.

Because most of the countries visited are not full or official EU members, Jon logged the final tally for his entire trip with 15 border crossings (almost always involving passport checks), 9 countries visited (including passing through Athens and Frankfurt to change planes), 10 different airports, 9 different flights, and 5 different currencies.

CARS NEWS

BY JEAN WANG



Hamed Gholizadeh



Yuting Zhou

Last fall, the Center for Applications of Remote Sensing (CARS) welcomed two new faculty as the Co-directors: Dr. Hamed Gholizadeh and Dr. Yuting Zhou. Dr. Gholizadeh received his PhD in Geography from Indiana University and worked as a Postdoc on remote sensing at University of Nebraska. His research focuses on quantifying landscape patterns using spectroscopy, plant phenotyping, artificial intelligence, spectral unmixing, subpixel target detection, and GIS.

Dr. Zhou obtained his PhD in Ecology and Evolutionary Biology at University of Oklahoma. He worked as a postdoc fellow in the USDA-ARS Grazinglands Research Laboratory before coming to our department. His research aims to advance understanding of Earth systems by using GIS, remote sensing (satellite remote sensing and unmanned aerial systems), eddy covariance, computer science (machine learning), and modeling in an integrated manner. Dr. Zhou is currently collaborating with Dr. Alex Caldeira Rocateli from the Department of Plant and Soil Science on a project using UAS to develop timely and cost-effective ways of detecting alfalfa yield and quality. He is also working on research that adopts machine learning and images from UAS to detect germination rates of peanuts with the aid of Oklahoma View. Oklahoma View is the state branch of American View, a coalition of scientists to use public domain remote sensing data for research and application. Dr. Zhou is part of the NSF Established Program to Stimulate Competitive Research (EPSCoR) for Oklahoma, a \$20 million project with a team of 34 researchers from Oklahoma State University, University of Oklahoma, University of Tulsa, Southwestern Oklahoma State University, Langston University, East Central University and Noble Research Institute.

Jing Wang continues her role as the Coordinator of the Center. Besides supporting the labs and technical requests, she collaborated with Cartography Services within the department to create planimetric maps for state parks using Lidar data. She finished and presented her work that uses programming to automate image analyses for studying the impacts of an aquatic species in Lake Carl Blackwell. In the spring she joined Dr. Zhou's research on alfalfa yield. After the outbreak of COVID-19 in Oklahoma in March, Jing created a webpage with daily updates of maps and graphs to track the pandemic within the state (<https://cars.okstate.edu/news/345-tracking-covid-19-in-oklahoma>). The webpage was later posted on OSU News and other OSU social media.



MEMORIAL DR. MICHAEL MYERS

Michael Myers passed away March 13, 2020 after a courageous battle with prostate cancer. Mike earned his B.A. in Anthropology at the University of Wisconsin – Madison, and his M.A. and Ph.D. in Geography at the University of Texas. He was initially hired into our department as Visiting Assistant Professor in 1999. The following year he accepted a tenure-track position with us as Assistant Professor. Mike was a cultural ecologist with expertise on cultivation ridges. He studied these agricultural landscapes in Latin America and northwestern Europe. While at OSU, Mike's research came to include geographic education. Together, he and Tom Wikle received almost \$300,000 in funding from NSF, through its Research Experience for Undergraduates (REU) and Course, Curriculum, and Laboratory Improvement (CCLI) programs. With Bruce Battles, a former colleague and staff member, Mike helped found TechniQuest Geographic, a non-profit institute in support of geographic and environmental education. Mike also worked with his wife, Diane, an archaeologist, conducting several cultural resource surveys and archaeological inventories for the Oklahoma State Historic Preservation Office. Mike taught a wide range of courses, including Physical Geography, Introduction to GIS, Field Techniques, Geography of Biotic Resources (forerunner of Biogeography), and Geography of South America. Mike and his family moved to Colorado in 2005. Mike was a kind, soft-spoken and easygoing colleague. He was a consummate teacher and mentor who enjoyed involving students and colleagues in his innovative projects and activities. He will be deeply missed.





FACULTY UPDATES



Jon Comer

Jon Comer has logged 26 years at OSU as of May 2020, and never imagined how strange things would turn out during the Spring 2020 semester – teaching “online” and watching the world shut down because of the coronavirus. But before the craziness set in, things were going at their usual pace. After a busy summer 2019 traveling (see below), the fall involved attending the usual conferences (SWAAG in Ft. Worth, Applied Geography in Charlotte, NC), teaching the usual classes, and providing departmental service as Associate Head and Graduate Coordinator (among other roles). Springing into 2020 with plans for AAG in Denver in April, life suddenly became very boring after spring break with the closure of campus (and nearly everything else).

Jon had two trips to Europe in 2019. In late May, he and Tom Wikle led a study abroad trip to Italy, Albania, and most of the former Yugoslavia, missing only Macedonia and Kosovo (see travelogue elsewhere in this Zenith as well as the August, 2019 monthly newsletter). Eight days after getting home, Jon and Shannon were off to Ireland again for two weeks, being based entirely in County Clare (on the west coast) but still getting out to Galway, the Burren, and Cork on day trips. Jon had already decided to take a break in 2020 from the study abroad trips before they would have gotten cancelled anyway, and who knows if we’ll resume after things get back to “normal”?



Carlos Cordova

Carlos Cordova seems to be always busy with something. He continues to teach Climate Change, Africa, and as of Spring 2020, Current Geographic Research. In the Spring, Carlos will be taking the job of GEOG 1114 coordinator and working on the labs (face-to-face and online) closely with a team of TAs.

His research continues, but adapted to the new COVID-19 restrictions. This means one thing: no travel. Therefore, hours in the lab and NRC (known also as The Bunker), the Microscope lab in MUR. The good thing of no travel means, however, more catch up with lagged projects and publications.

In addition to several papers published, in review, and in progress, Carlos is working on his fourth book: *The Lakes of the Basin of Mexico: The Evolution of Lacustrine Systems and Civilization*. For its publication, he signed a contract with Springer Nature, hoping to see it published some time in 2021.

One of his graduate students, Thornton Raskevitz, graduated in the Spring 2020. His PhD student, Tom Cox, is an ABD, and hoping to defend soon. In the past year, Carlos also advised two undergraduate students, Addison Van Zandbergen and Madahi Lozano, as part of the Geography Undergraduate Mentors Program.

Before the lockdown, Carlos was able to travel to Russia for Christmas and New Year’s, where he was able to meet with friends and visit several literary sites in Saint Petersburg and other cities in northwest Russia.



Alyson Greiner

This year Alyson Greiner was invited to chair the Social Sciences and History committee of CLEP, the College-Level Entrance Program, and to become a co-editor on a team proposing a new volume about the American landscape. She completed her third year as member of the Fulbright National Screening Committee for student proposals involving research or study in Australia, and traveled to Houston to participate in those deliberations. She and Clay Barrett organized and co-hosted another several sessions of Grandparent University, in which they introduced more geo-kids to the awesomeness of a Geography degree. Alyson enjoyed serving as faculty mentor in the Geography Undergraduate Mentors Program, and chalked up another memory-making experience by driving the university van with students to the SWAAG meeting in Fort Worth. She and life partner, Luis, spent some time in Sedona, Arizona last summer where they enjoyed plentiful sunshine, “butte-y-ful” hiking, and exploring its energy vortexes.



Thomas LaVanchy

During the summer of 2019, I worked with several colleagues to collect 500 questionnaires on water security in a township in Cape Town. The attached pictures are of a workshop I conducted to train enumerators of the questionnaires and a lecture I gave on water security. I am working on several articles to report our findings





Dale Lightfoot

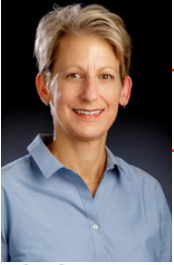
It was another year, and a significant milestone in my career as I marked 25 years at OSU and 30 in the classroom as an academic geographer. In addition to the pandemic disruptions of the late spring semester, a few other activities and adventures also stand out. In summer 2019, Dale and Tory explored the northern rim of South America, beginning in Guyana, then traveling next door to Suriname and French Guiana. We walked through the colonial-era capital cities in each country and spent most of our time in rainforest interiors; hiking jungle trails, boating down rivers, piranha fishing, exploring traditional lifeways in Amerindian villages, and enjoying the beauty and wildlife of the Guiana Highlands and coastal lowlands. I taught my usual mix of courses, including Geography of the Middle East and World Regional Geography, but offered four different sections in spring 2020 (one Middle East, two World Regionals, plus an Honors WR course). Most research efforts have been focused on my book—*Qanat: The Stream of Wells*—under contract with I.B. Tauris (London). I have been working on this book for the past three years and am nearing the finish line, with 14 (of 17) chapters completed. I revised and submitted an article to the *Journal of Historical Geography*, ("Traditional Environmental Knowledge and Transport Efficiency of a Canal Network in the Tafilalt Oasis, Morocco: A GIS Analytics Perspective"), co-authored with former and current faculty members and students in our department. This past year was my last as the Boren Awards and Fulbright Program Advisor for OSU, though I continue service as Faculty Advisor for the Fulbright Students and Scholars Association (international students studying at OSU on Fulbright scholarships). Though research and writing for the book occupied much of my time at home, I made a little progress on the Sopwith Camel project, too. This full-scale WWI reproduction aircraft now has wings covered in fabric (ceconite) and ready for painting, the radio was installed, and the engine runs like a top. Completion of the Camel and first flight must wait until the book is done.



Allen Finchum

During 2019-20 Allen Finchum continued his longstanding work with the Oklahoma State Historic Preservation Office as well as working on some other small research project of personal interest. Allen is still grateful for the support that Co-PI Mike Larson gives to the SHPO project and its' ongoing success. He has also begun several small projects/papers with Jesse Andrews (OSU Ph.D. Student) on vernacular regions and using online business data in "defining" the region. He and Jesse had a poster for the 2020 AAG Meeting originally planned for Denver, CO, and are considering submitting a related poster to the Online ESRI User Meeting in July 2020. Allen is also working with the Planning Committee for the 2020 SWAAG Meeting currently slated to be held in OKC if we are not forced or required to take the meeting to a virtual format - which will possibly move the SWAAG Meeting in OKC to 2021.

In 2019 Allen and Tanya's son Curtis took a new position as an English Teacher and Boys Basketball Coach at Jones High School outside Oklahoma City. In addition to English he is also the Journalism Teacher and the Boys and Girls Golf Coach. Allen spent many fun evenings attending Jones games this past season, and looks forward to another successful season this coming Fall if things return to a new version of normal.



Rebecca Sheehan

Over the last year, I have continued to engage with geographies of memory. My latest project with Jordan Brasher and Jennifer Speights-Binet, examines the Equal Justice Initiative in Montgomery, Alabama, as a form of regenerative memory-work. Findings from this research will be published in a special issue of the *Southeastern Geographer* on the Future of the South. Additionally, I am currently making revisions to the manuscript, "Intersectionality on the Ground: Public Maneuvering through an Assembly of Plurality with the Camel Toe Lady Steppers" for *Gender, Place, and Culture*. This article will contribute to work on parades and public space by applying a spatial intersectional framework, weaving the significance of space, place, context, scale, embodiment, and movement to subjectivities. And, whereas intersectional scholarship focuses on individual subjectivities, in this article, I apply an intersectional framework to embodied collectives in public space. This summer I have been in New Orleans, and while I obviously have not been directly taking in the culture of the city, I have had excellent takeout! I also will be doing some mountain biking in Arkansas just before the semester begins.



Steve Stadler

Steve Stadler has now finished 40 years with the Geography Department and has survived the on-line horror that was the Spring 2020 term. He survived as did the rest of his colleagues and is looking forward to better times as students return to campus. Steve is kept busy by his job and will take on a climate change and humanity course as he steps aside as the coordinator of physical geography after 15 years. He is still pushing ahead with wind power research with Scott Greene of OU and, as National Geographic Geography Steward of Oklahoma, trying to help the State Department of Education implement specifics into the recently adopted state geography guidelines. His wife, Barbara, is happily retired from her math position at Northern Oklahoma College and slowly going through all materials that have accumulated at home. Last summer, the Stadlers did a transatlantic cruise visiting Iceland, Greenland, and the Canadian Maritimes. The accompany picture shows that the Icelandic puffins were chagrined at the Stadler presence.





Jacqueline Vadjunec

In August, I finished my 2-year rotation as a visiting scientist and Program Officer for the Human-Environment And Geographical Sciences (HEGS) Program at the National Science Foundation (NSF) in Alexandria, Virginia. Before COVID-19, I was lucky to enjoy season tickets to the Kennedy Center, the National Opera, and the National Cathedral chamber music series. I thoroughly enjoyed my time on the East Coast. However, I also missed the big skies and high plains of Oklahoma. I am very happy to be back at OSU and was recently promoted to full professor. Although COVID-19 impacted our summer field research season, I continue to work out in the 5-states area of the Oklahoma panhandle on long-term adaptation to drought with my colleague, Todd Fagin (OU). This is the first field season we've missed out there in 12 years. I look forward to being in the field again hopefully soon!



Tom Wikle

In April 2020, Tom Wikle completed 20 years as Associate Dean in the College of Arts and Sciences. In addition to his administrative work and teaching a section of physical geography, Tom published a paper in *Transactions in GIS* with former OSU colleague Adam Matthews. Another paper appearing in *Focus on Geography* examined oil production in Equatorial Guinea. Tom continues his longtime research collaboration with linguistic Guy Bailey. In 2019, they published a chapter on mapping U.S. and Canadian language variation and change in *Changing World Language Map* (edited by Stan Brunn). Tom is also engaged in ongoing research that examines Oklahoma's aviation history. Appearing in *Chronicles of Oklahoma*, his latest article explores Ft. Sill's role in the birth of U.S. combat aviation. In May and June 2019, Tom joined fellow professor Jon Comer in leading a study abroad course to Italy, Albania, Montenegro and Croatia. Before meeting students, Tom and Jon completed a driving tour through Serbia, Bosnia, Croatia, and Slovenia with memorable stops in Belgrade, Sarajevo, and Slovenia's Lake Bled. On most weekends Tom can be found giving flight instruction at Stillwater Regional Airport. Tom's wife Missy continues to serve as OSU Assistant Vice President with responsibilities for several campus offices and activities including New Student Orientation. Their daughter Paige and her husband Joey have one child with another on the way. In June 2020, Tom and Missy's son Garrett married Addi, an OSU graduate from Tulsa.



Hongbo Yu

Dr. Hongbo Yu continued to serve as the Coordinator for the long-running GIS Certificate program, which was recently changed to a 15-hour program with more flexibility in the curriculum for students to complete the program. Several programs on campus (including Civil and Environmental Engineering, Biosystems/Agricultural Engineering, Natural Resource Ecology and Management) showed great interests in promoting the certificate program within their units. Hongbo also worked on developing an online version of the Fundamentals of GIS course last year. After figuring out solutions to several key technical issues (e.g., accessing the ArcGIS software package and conducting the hands-on practice online), Hongbo successfully delivered the course online in the fall semester of 2019. This is the first technical course in the department moved online, which provides useful insight on online delivery of other tech courses in the department in the future. In the fall 2019, Hongbo teamed up with colleagues in the OSU Vet School and Agricultural Economics to prepare a proposal for the 2019 National Animal Health Laboratory Network Enhancement grant. In the proposed two-year project, they planned to develop a GIS-based interactive spatial agrometrics tool to support the estimation of cattle, swine and/or poultry populations relative to the proximity to a point of interest. The developed tool is expected to provide regional data that assists NAHLN in test capacity and capability management, regional surge capacity estimation, resource allocation, and potentially help identify a geographic region with unmet diagnostic needs. The proposed project was selected for funding and started in March 2020.



FoGG Tailgate party Homecoming 2019

FoGG News:

Unfortunately, Covid-19 limited our events in the Spring. Before campus closure, the president of FoGG changed in February. Jesse Andrews took over from Fernanda Ramirez Saenz. In the Fall, FoGG hosted a tailgate party for Homecoming.



The mission of the Department of Geography is:

- to provide an exceptional educational experience in a student-centered departmental community that emphasizes the value of lifelong learning, employs engaging instructional activities, and prepares students for careers in an increasingly globalized world;
- to conduct innovative theoretical and applied research that promotes discovery, cultivates interdisciplinary and collaborative partnerships, fosters socioeconomic development, and responds to the needs of society;
- to promote the importance and relevance of geography to the public and to provide geographic expertise to the university, community, and state.

The OSU Zenith is a publication of Oklahoma State University, College of Arts and Sciences, Department of Geography.

All communications should be mailed to: geog@okstate.edu, or

OSU Geography Department
ATTN: Zenith
337 Social Sciences & Humanities
Stillwater, OK 74078-4073
2020 © OKLAHOMA STATE UNIVERSITY

CONNECT WITH US!



OSU Geography Department



@GeographyOSU



@geographyosu



I'D LIKE TO MAKE A DIFFERENCE AT OSU BY SUPPORTING **THE DEPARTMENT OF GEOGRAPHY**

STEP 1: Your information

Name _____ Spouse Name _____

Address _____ City _____ State _____ Zip _____

Home phone _____ Cell phone _____ Email _____

STEP 3: Choose your area of impact

- Geography Excellence Fund (22-39500)
- Susan Shaull Outstanding Graduate Teaching Award (22-82900)
- Other: _____
- *Unspecified gifts will be designated to the general scholarship fund.



Please send your payment directly to:
OSU FOUNDATION
P.O. Box 258818 | Oklahoma City, OK 73125-8818

STEP 2: Your level of impact

\$50 \$100 \$150 \$200 \$250 Other: _____

*Gifts to the OSU Foundation may be tax deductible.

STEP 4: Make your impact

X20GZN

one-time in monthly installments:

\$_____ beginning _____ mm/yyyy

- My check, payable to OSU Foundation is enclosed
- Please charge my credit/debit card

Card Number _____ Exp. Date _____

Name on Card _____ CVC Code _____

Signature _____

* Pledge reminders will be sent based on your fulfillment schedule.